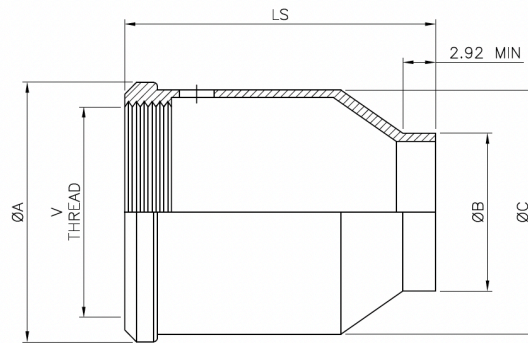


## Straight; Spin Coupling

Connector Group K

MIL-DTL-38999 Series I & Series II

M85049	/33-1	-10
SERIES	SLASH #	ACCESSORY SHELL SIZE
	33-1: Straight	Table A



FINISH
Aluminium Alloy

Accessory Shell Size	Connector Shell Size	A Ø Max.		B Max.		Ø C Max.		LS Max.		V Thread UNEF Class 2B	
		inch	mm	inch	mm	inch	mm	inch	mm	inch	mm
08	8 / 9	0.59	15.09	0.36	9.12	0.52	13.11	0.84	21.44	0.4375-28	11.11
10	10 / 11	0.72	18.26	0.41	10.31	0.64	16.28	0.97	24.61	0.5625-24	14.29
12	12 / 13	0.84	21.44	0.50	12.7	0.77	19.46	1.09	27.79	0.6875-24	17.46
14	14 / 15	0.97	24.61	0.58	14.68	0.89	22.63	1.16	29.36	0.8125-20	20.64
16	16 / 17	1.09	27.79	0.64	16.28	1.02	25.81	1.22	30.96	0.9375-20	23.81
18	18 / 19	1.22	30.96	0.69	17.48	1.14	28.98	1.34	34.14	1.0625-18	26.99
20	20 / 21	1.34	34.14	0.73	18.64	1.26	32.13	1.47	37.31	1.1875-x18	30.16
22	22 / 23	1.47	37.31	0.80	20.22	1.39	35.33	1.59	40.49	1.3125-18	33.34
24	24 / 25	1.59	40.49	0.86	21.82	1.52	38.51	1.72	43.66	1.4375-18	36.51