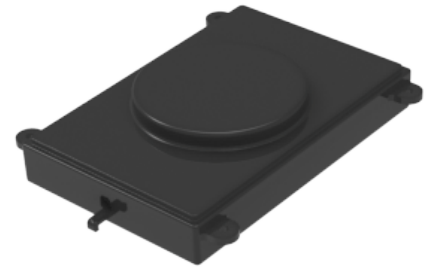


# IN-SEAT PED POWER

## Qi2 WIRELESS POWER

Amphenol PCD's Qi2 Wireless Power module incorporates the latest Qi2, single coil, charging protocol with magnetic alignment, resulting in a smaller, lighter and more efficient charging surface than the previous coil Qi1X standard. As more devices move to wireless, let Amphenol PCD's Qi2 Wireless Power module update your passenger experience.



### Features & Benefits

Qi2 Standard + NFC
Single coil magnetic alignment
Over temperature, over current, FOD and RFID protection
USB Input Interface
Boeing D6-36440 / Airbus ABD0100 ready
Field upgradeable firmware
DO-160 compliant, FCC Compliant

### Materials & Specifications

Item	Specification
Input Voltage	28VDC $\pm$ 10%
Input Current	0.70A, Nominal @ 28V, 0.90A Maximum
Output Power Rating	15W
Standby Current	< 50mA
Average Sleep Current	< 50uA
Efficiency	85% minimum efficiency MPP
Magnet	Qi 2.0 N48H Magnet
Approximate Weight	250 g
Approximate Dimensions	(120mm X 90mm X 15mm)
Interface	USB 2.0 HID system interface
Operating Temperature	+55° to -15°
Qualification	DO-160 compliant, FCC. Qi2 Compliant

## Qi2 WIRELESS POWER HIGHLIGHTS

1. Qi2
2. Cable free charging
3. Single coil
4. Magnetic alignment
5. 15W of power