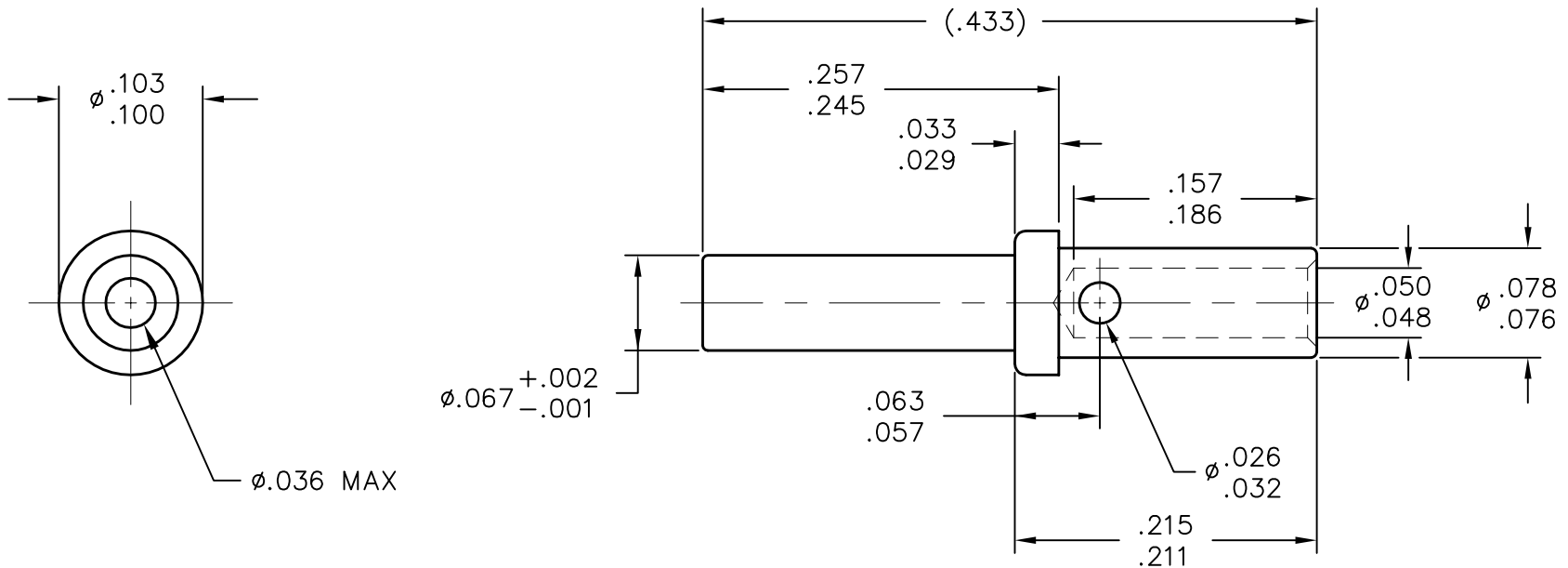


REV	ECN	APP'D
G	1423	

NOTES:

1. MATERIAL:
CONTACT - LEADED COPPER, UNS NO. C18700.
HOOD - CRES, TYPE 305 PER FED SPEC QQ-S-766.
2. FINISH:
CONTACT - GOLD PLATE PER MIL-G-45204, TYPE I, GRADE C, CLASS 1
OVER COPPER FLASH.
HOOD - PASSIVATE PER FED SPEC QQ-P-35.
3. MILLIVOLT DROP - PER PARA. 3.5.4 OF MIL-C-39029.
4. PART SHALL BE FREE OF BURRS AND FOREIGN MATERIAL.
5. SURFACE FINISH SHALL BE $\sqrt{32}$.
6. CONTACT DESIGNED TO ACCEPT .028/.032 DIA. PIN.
7. M22520/2-01 CRIMP TOOL & M22520/2-11 POSITIONER SHALL BE USED TO
TERMINATE CONTACTS TO THEIR RESPECTIVE WIRES.
8. M81969/14-02 TOOLS CAN BE USED FOR INSERTING AND REMOVING CONTACTS.



DIMENSIONS ANSI Y14.5M UNITS: INCHES ACAD FILE	TOLERANCES .XX ± .XXX ± ANGLES ±2°	PROJECTION 	SPECIFICATION DRAWING			TITLE SOCKET CONTACT SIZE 22/20	
			ENGR A. PATRIE 8/5/98				
ORIGINAL	THIS DOCUMENT CONTAINS PROPRIETARY INFORMATION WHICH IS THE CONFIDENTIAL PROPERTY OF PCD, INC. PEABODY, MA, USA	CHKD		SIZE A	DWG NO. CNS109900	REV G	
		APPD		CODE: 58982	SCALE: 8X	SHEET 1 OF 1	