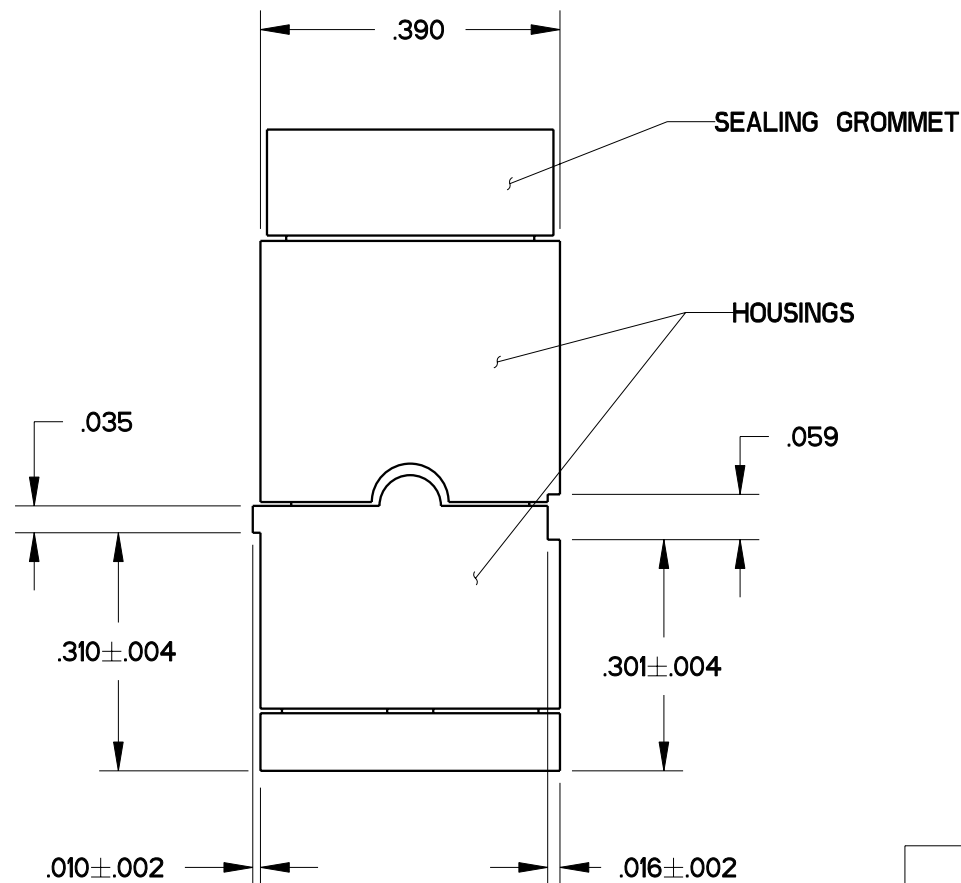
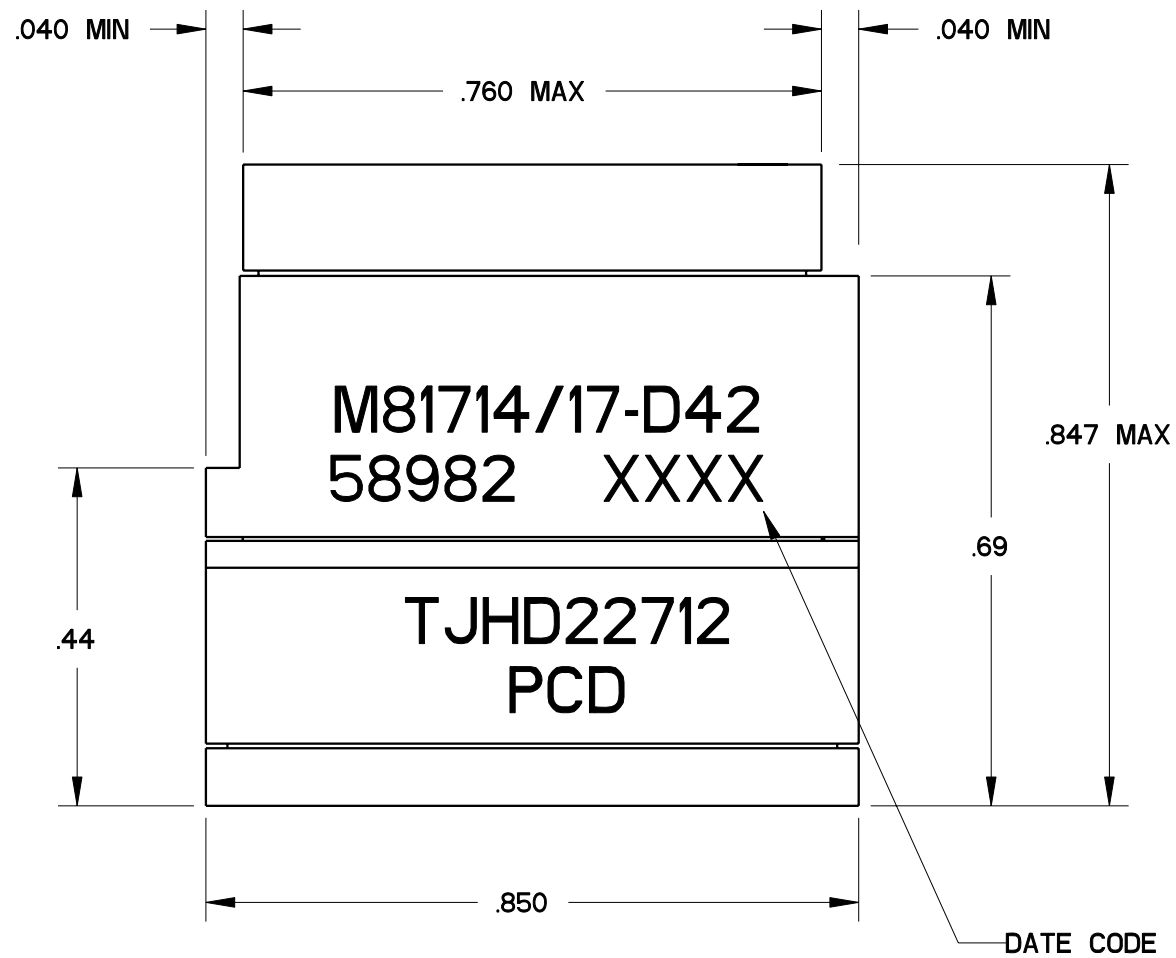
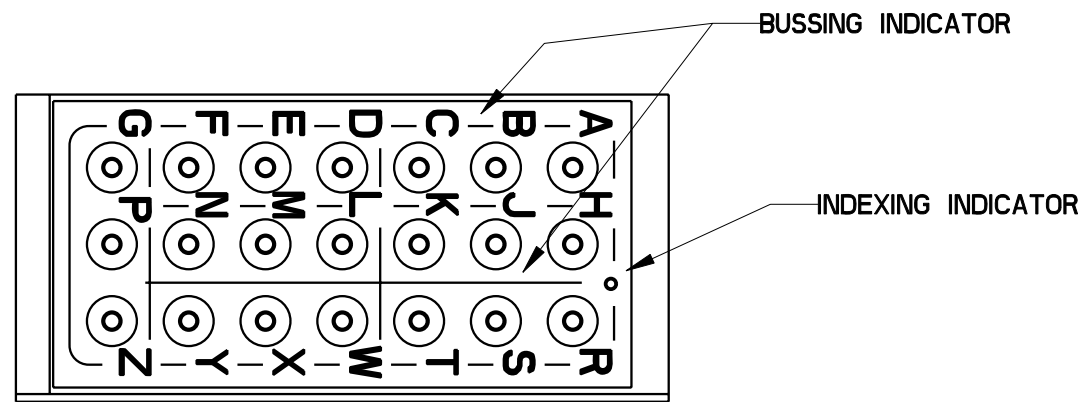


REV	ECN	APP'D
-	2939	JR 2/7/97
A	3043	AP 7/22/97
B	3338	



TJHD22612

TJHD22612

- NOTES:
 1. MATERIAL:
 HOUSINGS - THERMOPLASTIC, COLOR: BLACK.
 GROMMET - SILICONE RUBBER, COLOR: BLUE
 INTERNAL BUSSING, CONTACT RETAINERS - COPPER ALLOY
 2. MODULE ACCEPTS M39029/1-507 PIN CONTACTS

DIMENSIONS	TOLERANCES	PROJECTION
ANSI Y14.5M	.XX ±0.01	
UNITS: INCHES	.XXX ±0.005	
Pro/E FILE	ANGLES ±2.0°	
ORIGINAL	THIS DOCUMENT CONTAINS PROPRIETARY INFORMATION WHICH IS THE CONFIDENTIAL PROPERTY OF AMPHENOL PCD INC., PEABODY, MA	

Amphenol Pcd	
<i>SPECIFICATION DRAWING</i>	
ENGR	
A. PATRIE	03/09/06
CHKD	
APPD	

PART NO.	INCLUDED W/ MODULE
TJHD22612	MODULE ONLY
TJHD22712	22 EACH M39029/1-507 PIN CONTACTS 2 EACH MS27488-22 SEALING PLUGS

<i>TITLE</i> MODULE, TERMINAL JUNCTION SIZE 22, HI-DENSITY D42 BUS ARRANGEMENT			
SIZE	DWG NO.	REV	
B	TJHD22612	B	
CODE: 58982	SCALE: 4:1	SHEET 1 OF 1	